

OEE MODULE TECHNICAL DATA

The OEE software module provides an intuitive WEB-based frontend for viewing and analysing your plant performance based on data stored in a standard MS-SQL database.

Data from plant units/machines is typically collected using an OPC-connection. The Au2mate OEE solution is scalable. Start with one unit/machine and then expand the solution to cover the complete enterprise.

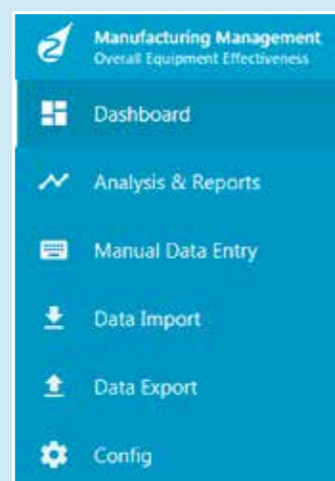
The physical model is based on the ISA 88 standard and OEE data stored in a database structured according to the ISA 95 standard

THE OEE MODULE INCLUDES MENUS/FUNCTIONS RELATED TO:

- Dash boards – highly configurable presentations of OEE & production data
- Analysis & Reports
- Manual data entry
- Data import/export
- Settings/configuration

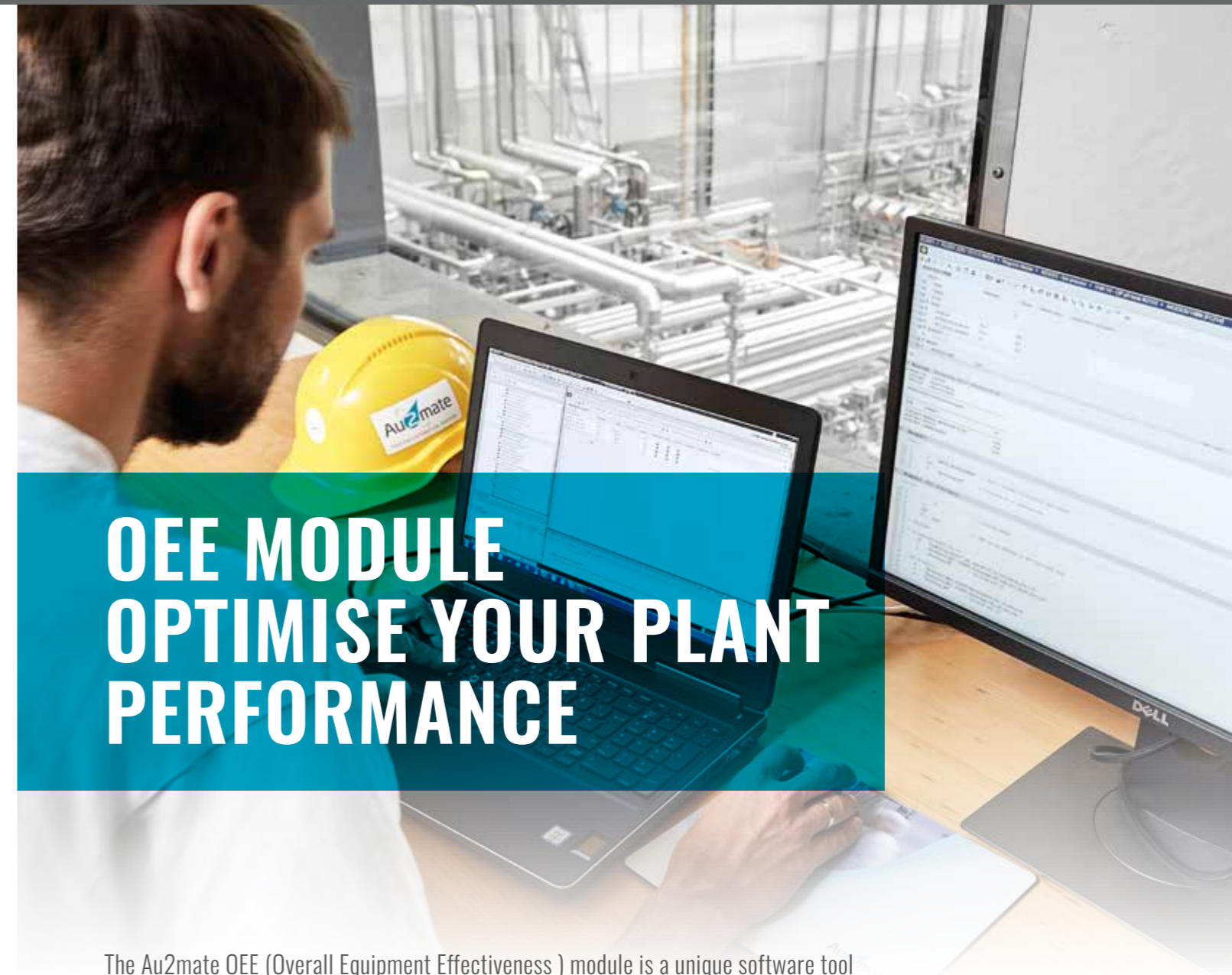
SYSTEM REQUIREMENTS:

- Windows Server 2012 R2 or later - alternatively
- Windows 7 or later
- MS SQL 2012 standard or later



Au2mate – Your Professional Partner in Automation, Industrial IT & Plant optimisation

www.au2mate.com



OEE MODULE OPTIMISE YOUR PLANT PERFORMANCE

The Au2mate OEE (Overall Equipment Effectiveness) module is a unique software tool for optimisation of your plant performance – covering a single machine or at complete factory/enterprise level.

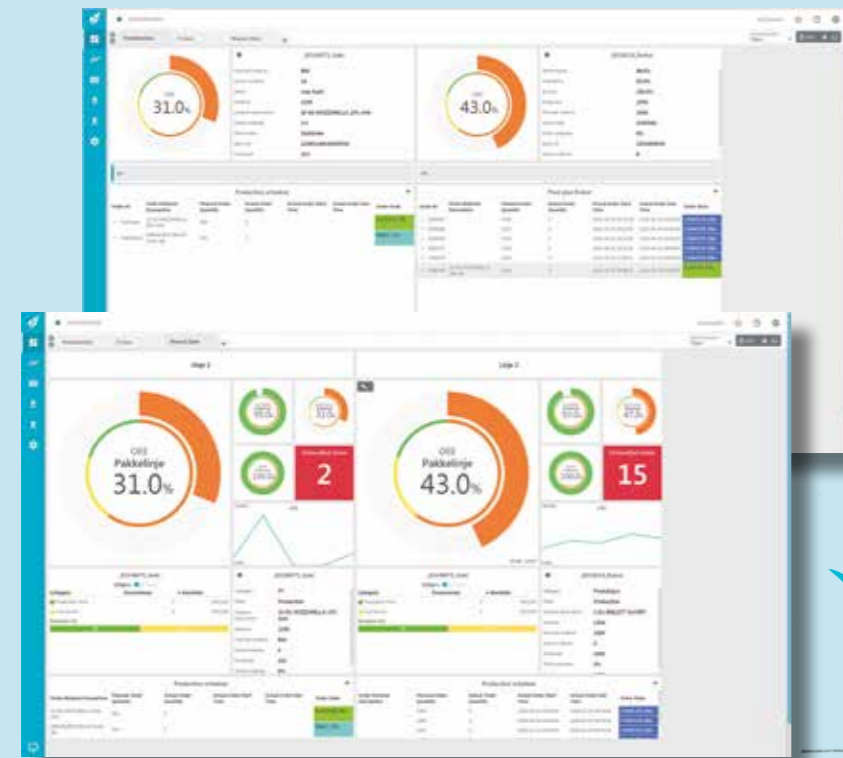
Key features includes:

- Configurable OEE dashboard
- Data analytics for plant optimisation
- Easy intuitive plant model setup
- Data import/export for integration
- Integrated production/shift plan

OPTIMISE YOUR PLANT PERFORMANCE & INVESTMENT

The Au2mate OEE software module offers a unique tool for identifying

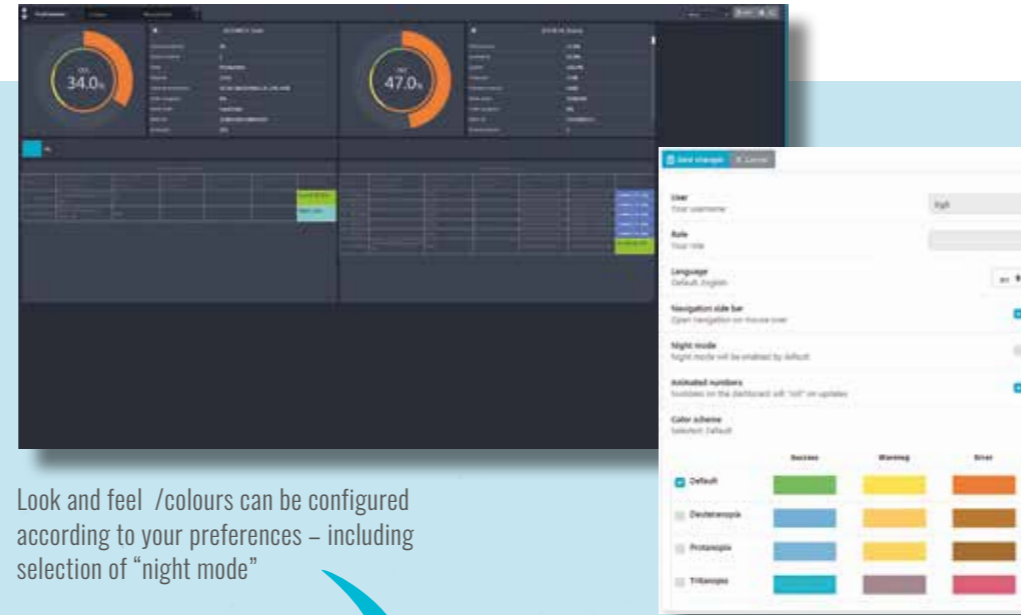
- OEE Score - Key indicator of the effectiveness of your equipment/line/factory
- Top 10 stop reasons - What to fix to get the greatest improvement
- Here and now status of your production line - Is production on schedule / where is support needed ?
- A small investment which will enable you to optimise your plant investment!



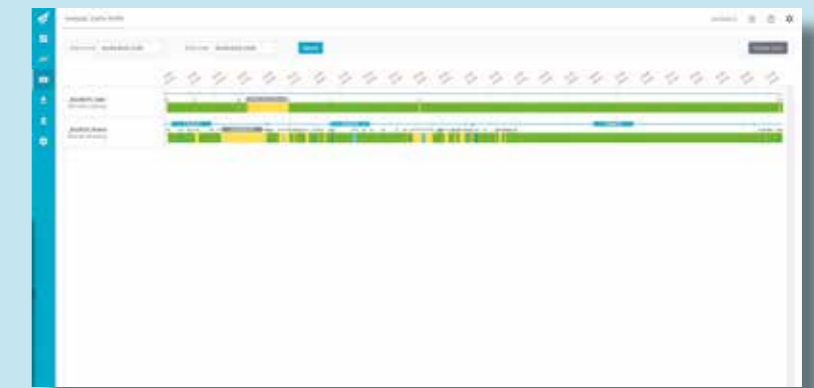
Intuitive and configurable user interface with OEE and production status data

INTUITIVE & USER FRIENDLY GUI

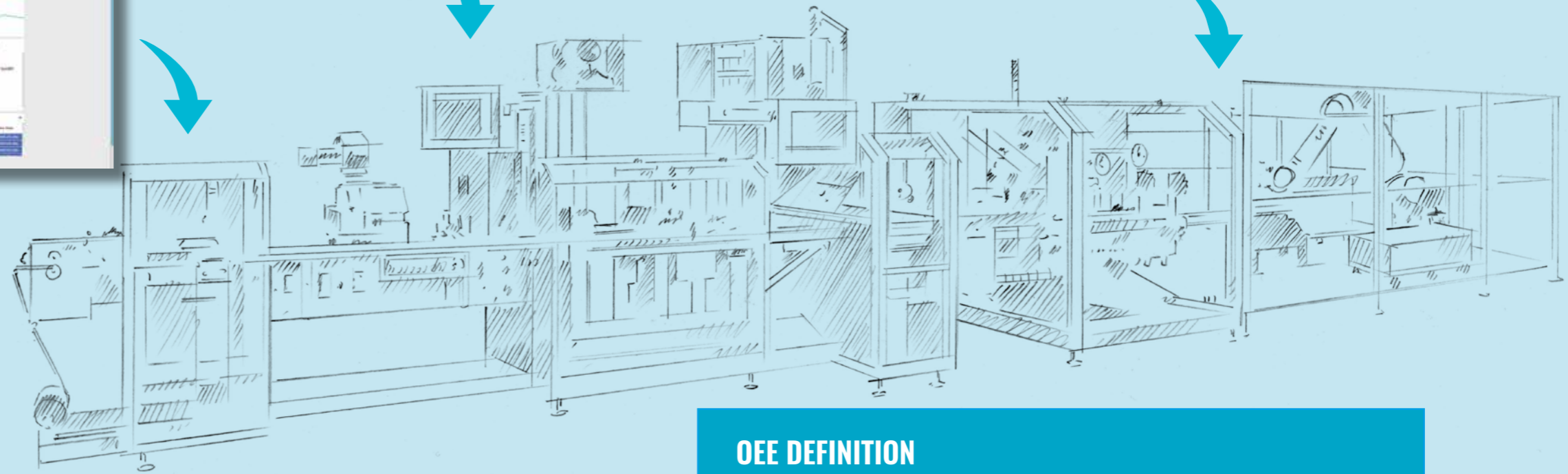
- Inspired by Windows Metro design
- Focus on speedy and highly versatile data views
- Simple and intuitive GUI enabling quick and effective configuration of OEE setup
- Quick and easy configuration and setup of the OEE solution



Look and feel /colours can be configured according to your preferences - including selection of "night mode"



Easy to use/integrated function for entering manual data & making corrections



A COMPLETE OEE PACKAGE

- Includes machine, line, area and factory OEE-calculation
- Integration to ERP order management
- Structured to handle solutions from one unit to a complete enterprise (ISA 88 structure)
- OEE data stored in a database structured according to the ISA 95 standard
- The solution is preconfigured for easy integration to machines with PackML interface
- The OEE module works both as a standalone solution and as fully integrated in the Au2mate Manufacturing Management solution
- Supports OEE solution for manual, semi-automatic and fully automatic controlled plants

OEE DEFINITION

OEE (Overall Equipment Effectiveness) is an international recognised term for measuring the effectiveness of manufacturing equipment/lines.

OEE is calculated based on three factors:

- Availability - Ratio of running time to planned production time
- Performance - Ratio of actual speed to ideal speed
- Quality - Ratio of good part to total parts produced

$$\text{OEE} = \text{AVAILABILITY} \times \text{PERFORMANCE} \times \text{QUALITY}$$

OEE Score of 100% means that the equipment is producing only good parts, as fast as possible, with no stop time.