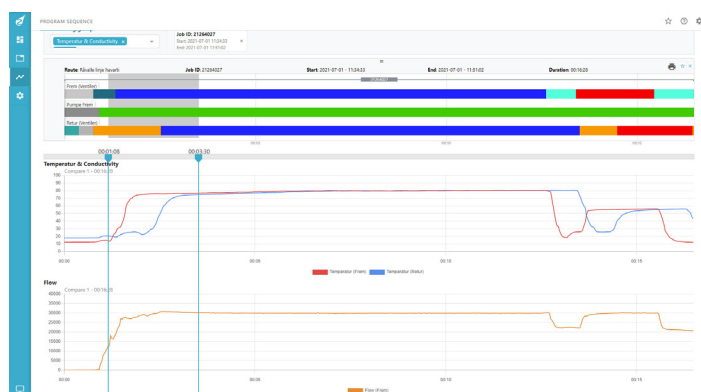


Dairy plant automation

CIP DATA ANALYSIS

CIP DATA ANALYSIS

- Easy and fast access to data
- Fast overview of data
- Optimising tool – reduces waste and time
- Highly flexible report service
- Compared with golden batches to increase efficiency and analyse data
- Customisable points of interest
- Document your CIP processes



APPLICATION

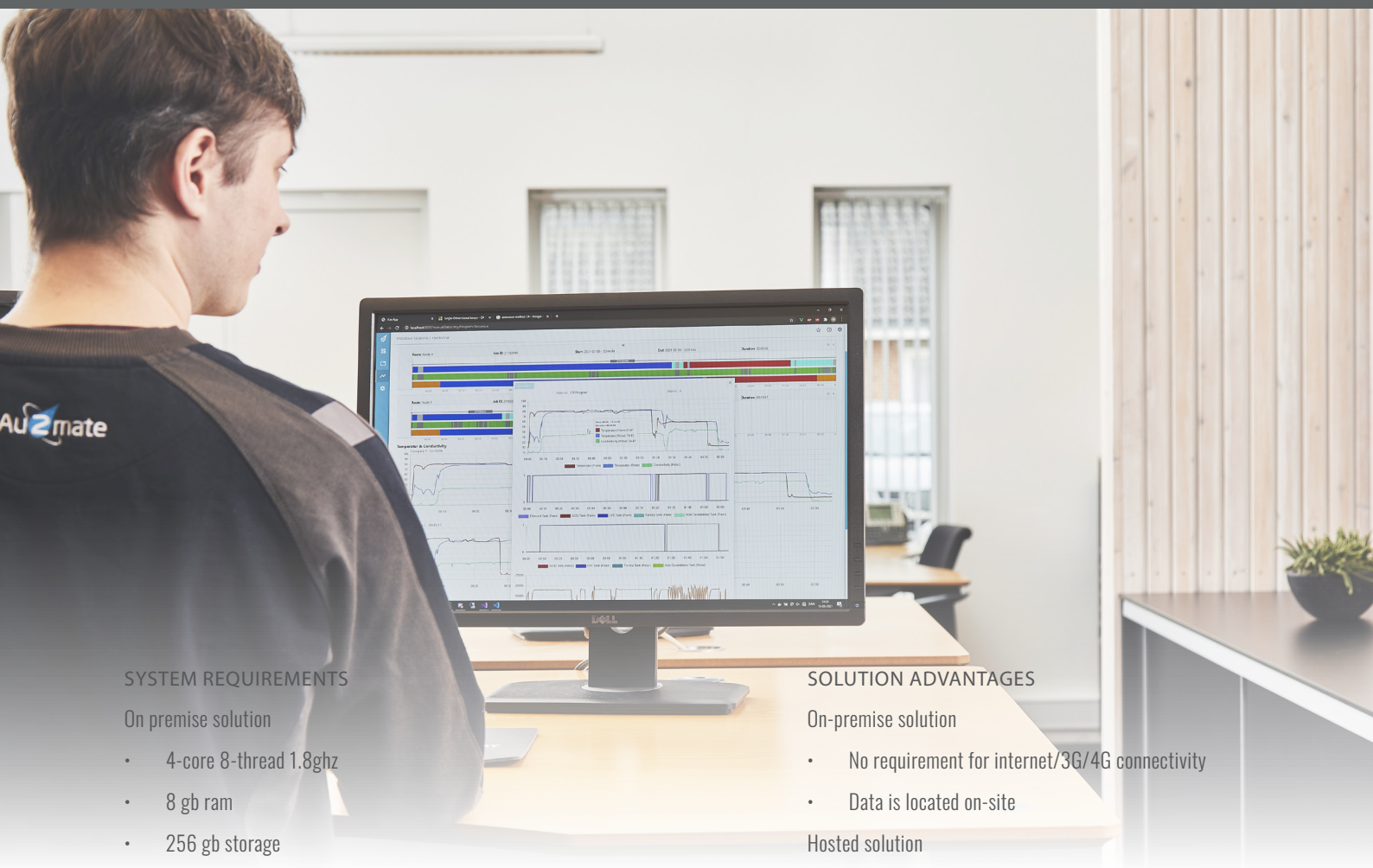
Centralised automation systems today include features for a large amount of data per default being collected in databases that hold historical information on everything from sequence behaviour, alarms, process values etc.

Au2mate has developed a CIP data analysis module continuously monitoring the behaviour in the CIP plant. This “Advanced Data Analysis” application automatically monitors CIP forward and return values (temperature, conductivity, flow rate) and when paired with the CIP sequence program steps and timers, automatic analysis on each CIP object is performed by the software.

The application will create reports for each CIP route/object, providing an intuitive graphical dashboard with indication of deviations, warnings, and critical alarms, all guiding the dairy staff to trim and adjust on recipe and equipment parameters, optimising on effectiveness, quality, and cost, and at the same time minimising wastewater, advantageous to environment.

The data analysis software package is initially developed for CIP plant optimisation but moving forward developments for optimisation in other process areas e.g., on equipment like pasteurisers, UHT plants etc., will be initiated.

Au2mate offers different installation options, both cloud-based and on-premises solutions.



SYSTEM REQUIREMENTS

On premise solution

- 4-core 8-thread 1.8ghz
- 8 gb ram
- 256 gb storage
- Windows 10 home/Windows 2019 server
- Docker needs to be installed for InfluxDB v2.0
- MSSQL Express 2019
- SIA box

Hosted solution

- SIA box

SOLUTION ADVANTAGES

On-premise solution

- No requirement for internet/3G/4G connectivity
- Data is located on-site

Hosted solution

- Minimum local setup and local hardware (SIA box and potential modem)
- Backup is provided in the solution
- Updates/fixes are implemented automatically

