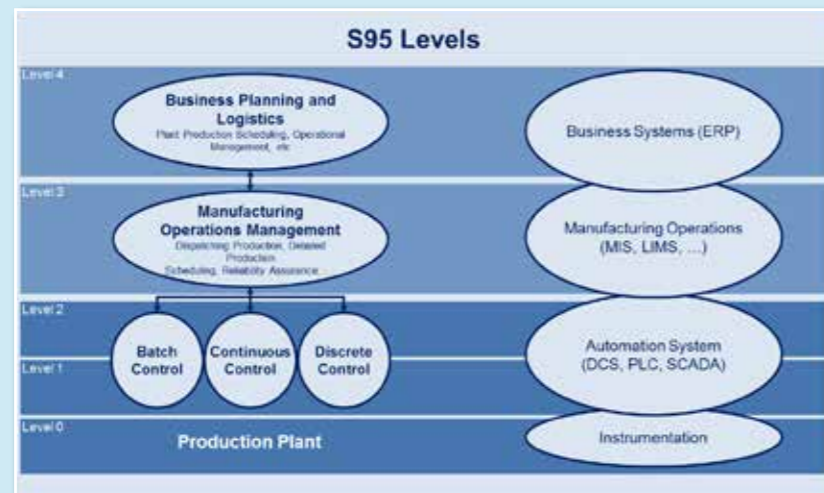


MES SOLUTION TECHNICAL DATA

The Au2mate MES solution is based on international standards and open platform software. The MES solution is using a standard MS-SQL database and provides an intuitive WEB-based front-end for configuring, viewing and analysing plant operation and performance.

- Based on international standards – ISA S88 & S95
- Based on open platforms (e.g. Wonderware IAS)
- Microsoft server & SQL database
- Historian database
- Microsoft reporting services for reports
- WEB-based access / front-end
- Production / CIP performance reporting - including traceability



Au2mate – Your Professional Partner in Automation, Industrial IT & Plant optimisation.

www.au2mate.com



MES SOLUTION ENTERPRISE TO PLANT INTEGRATION

AU2MATE MES SOLUTION PROVIDES COMPLETE FACTORY/ENTERPRISE INTEGRATION

KEY FEATURES INCLUDE:

- Full integration between ERP and shop floor
- Execution of process orders from ERP
- Production scheduling
- Material and product definitions
- Version controlled recipe configuration/handling
- Full material/product traceability
- Configurable OEE dashboard
- Data analytics for plant optimisation
- Reporting portal accessing performance and batch reports

The Au2mate MES software provides a configurable and highly scalable Manufacturing Execution System (MES) which can be applied to essentially any industrial manufacturing or production process.

Using real-time production information, decision makers and operators can effectively manage the order flow and production execution, tracking the transformation of products from raw materials to finished goods, and gathering real-time information on yields, quality, resource and asset management.

KEY BENEFITS:

- Reduce production order lead time.
- Improve asset utilisation by identifying production bottlenecks.
- Improve inventory velocity through increased visibility.
- Improve predictability of order fulfilment by monitoring accurate 'planned vs. actual' production quantities.
- Reduce time-to-volume for new product introductions with quick 'change-overs' between products and lines.
- Lower variance in production results by improved consistency.
- Improve compliance and governance through complete electronic system records.

MES



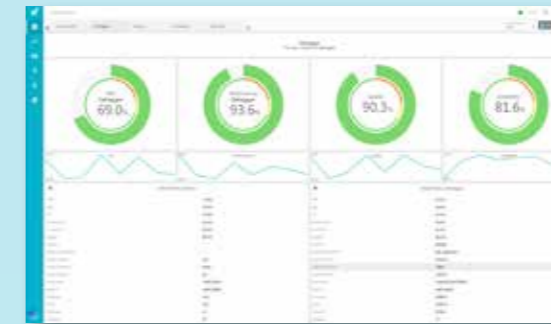
PRODUCT DEFINITION / RECIPES

- Product definition
- Bill of material (BOM)
- Process parameters



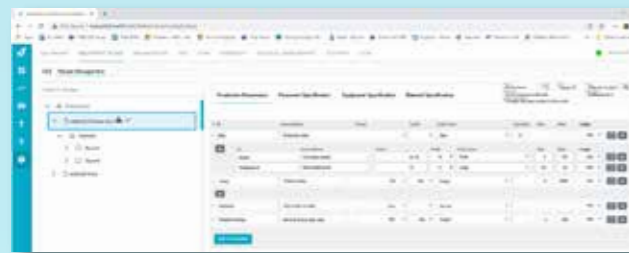
ERP INTEGRATION

- Process orders
- Bill of material (BOM)
- Production scheduling
- Equipment utilisation
- Material usage
- Work order status
- Performance data
- Storage location



OEE PROCESS IMPROVEMENT

- Machine & line OEE
- Integration to ERP process / Work order
- OEE data stored in ISA 95 standard structure
- Preconfigured for PackML interface



MATERIAL DEFINITION / MANAGEMENT

- Material definition database
- Grouped in material classes
- Attributes on material properties
- Synchronisation with ERP system

MATERIAL HANDLING

- Recording of supplier LOT data for tracking purposes
- Collection of quality input data
- Storage location to ERP



DATA ANALYSIS

- Optimising tool - reduces time and waste
- Document your processes
- Compare with golden batches to increase efficiency and analyse data
- Highly flexible report services

PERFORMANCE MANAGEMENT

- Production reporting
- Track and trace facilities

